

# Update for Grasslands on the Trilateral

June 3rd, 2021

David Borre – Pronatura Noreste, A.C  
Jurgen Hoth - Co-chair North America RISG  
Arvind Panjabi – Bird Conservancy of the Rockies

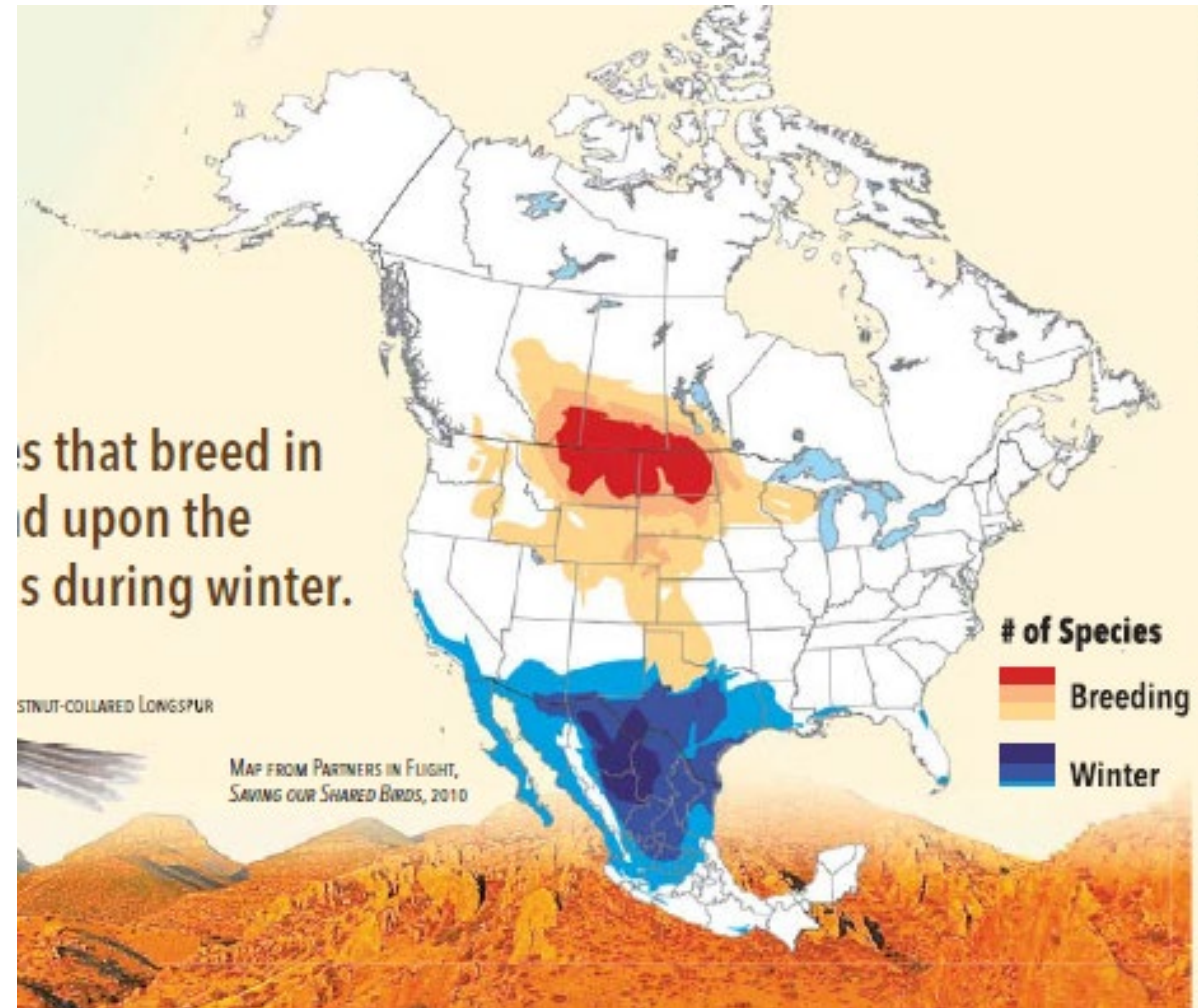


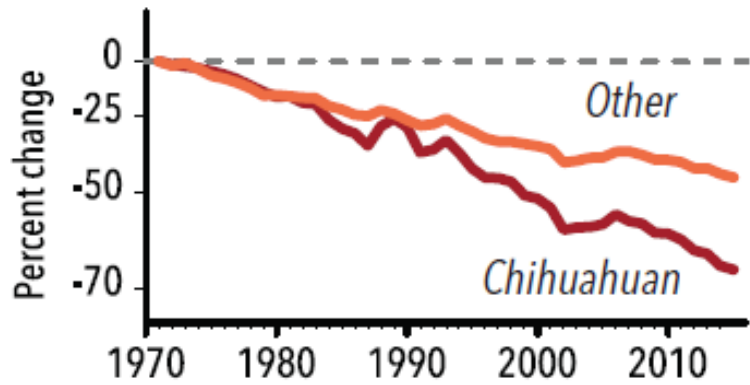
# Grasslands birds in North America

90%  
migratory



85%  
wintering in Mexico



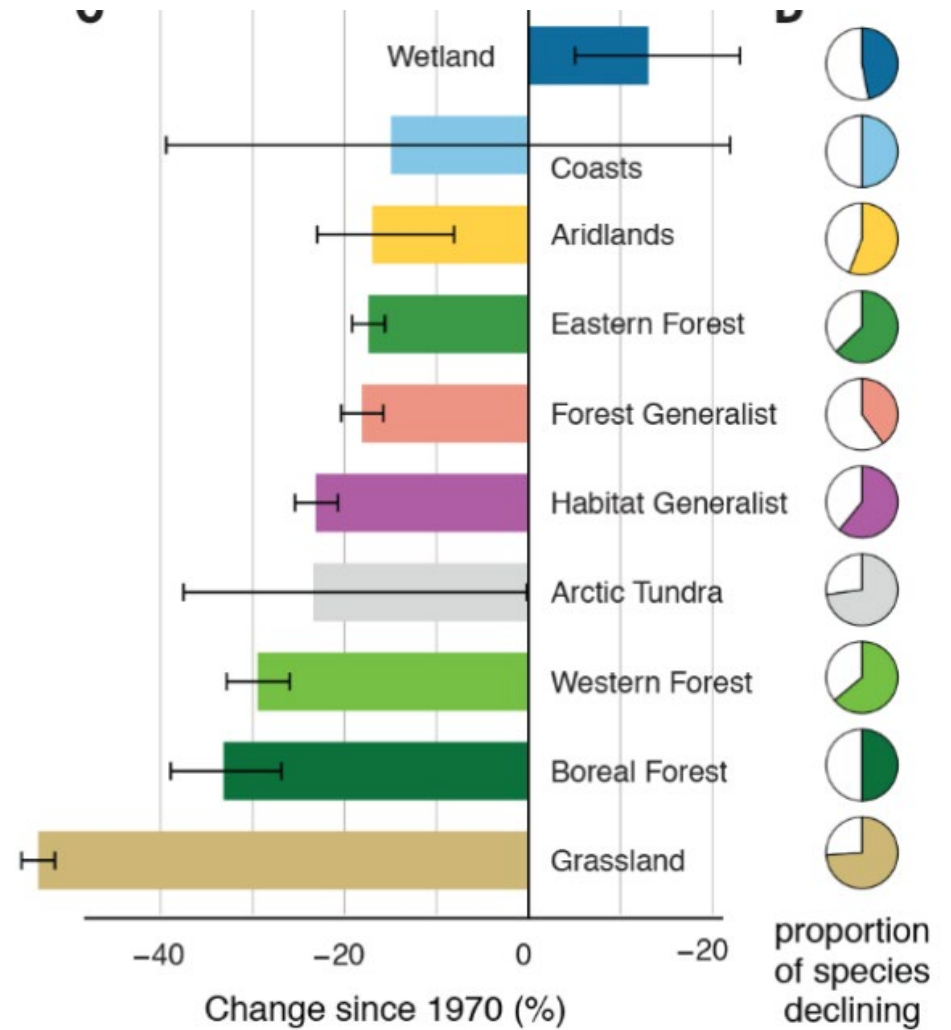


Grassland's species face -70% (NABCI, 2016)



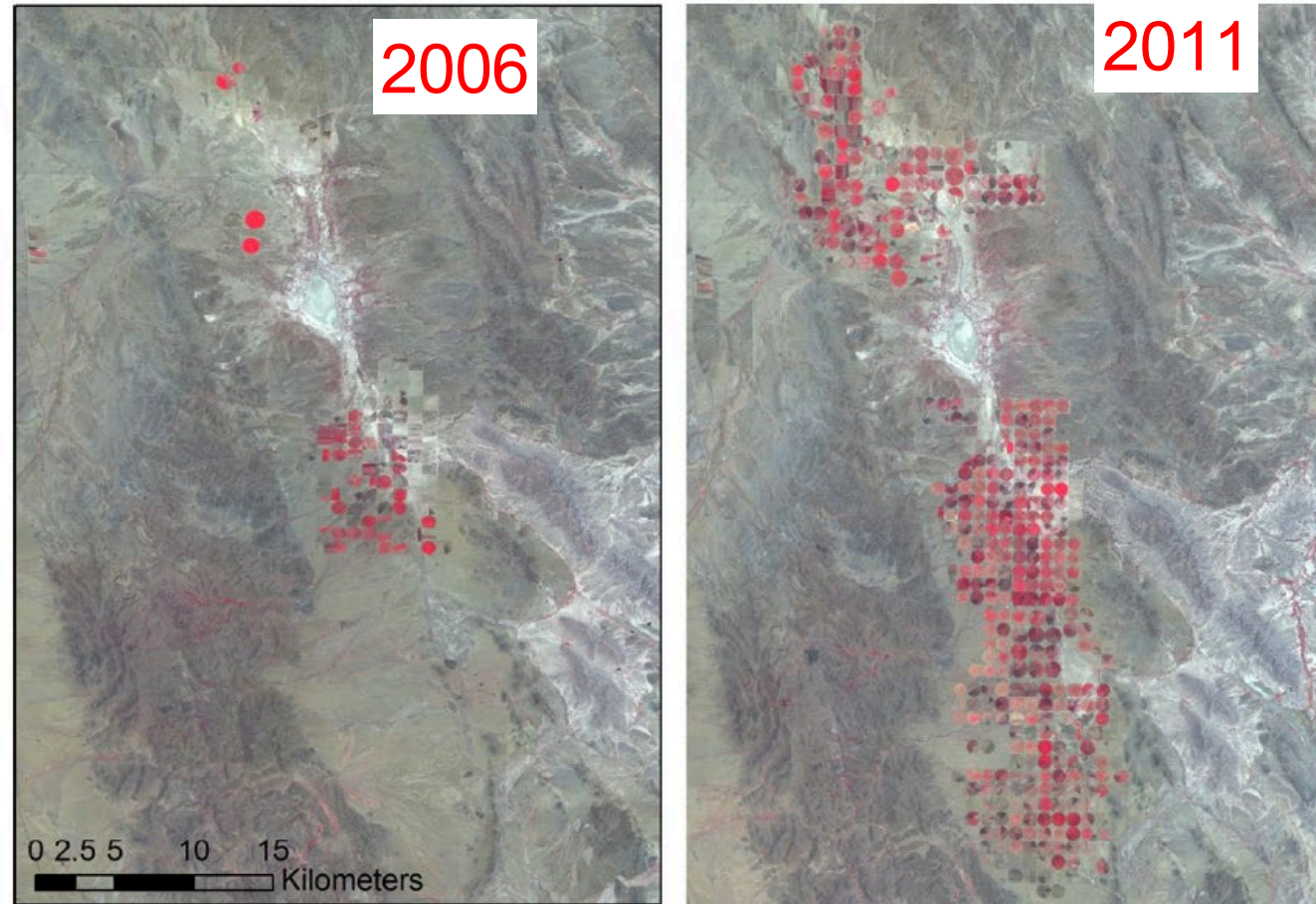
Photograph: David Borré/Pronatura Noreste, A.C

1/3 of the grasslands bird are threatened



From 1970 grasslands birds are those with the most decrease in their populations (Rosenberg K., et al 2019)

# Grasslands lost



**Fig. 2.** Tarabillas Valley (2006 left, 2011 right) False Color Infrared image using Landsat 5 Thematic Mapper data.

Pool, et al., 2014. Rapid expansion of croplands in Chihuahua, Mexico threatens declining North American grassland bird species. *Biological Conservation*, 170, 274-281.

# Grasslands lost



Pronatura Noreste A.C, 2019. GPCA El Tokio land-use change in Natural Protected Area in Nuevo Leon State 2000-2019. Using LandSat-7 imagines from EarthExplore (<https://earthexplorer.usgs.gov/>)

# Migratory Bird Working Table

From May 17-20, 2021



## Agreements

- **Increase and formalize Coordination** of efforts to reduce priority threats
- Sign a **Letter of Intent (LOI)** Can-Mx-US
- Improved Coordination of Monitoring and Information Sharing

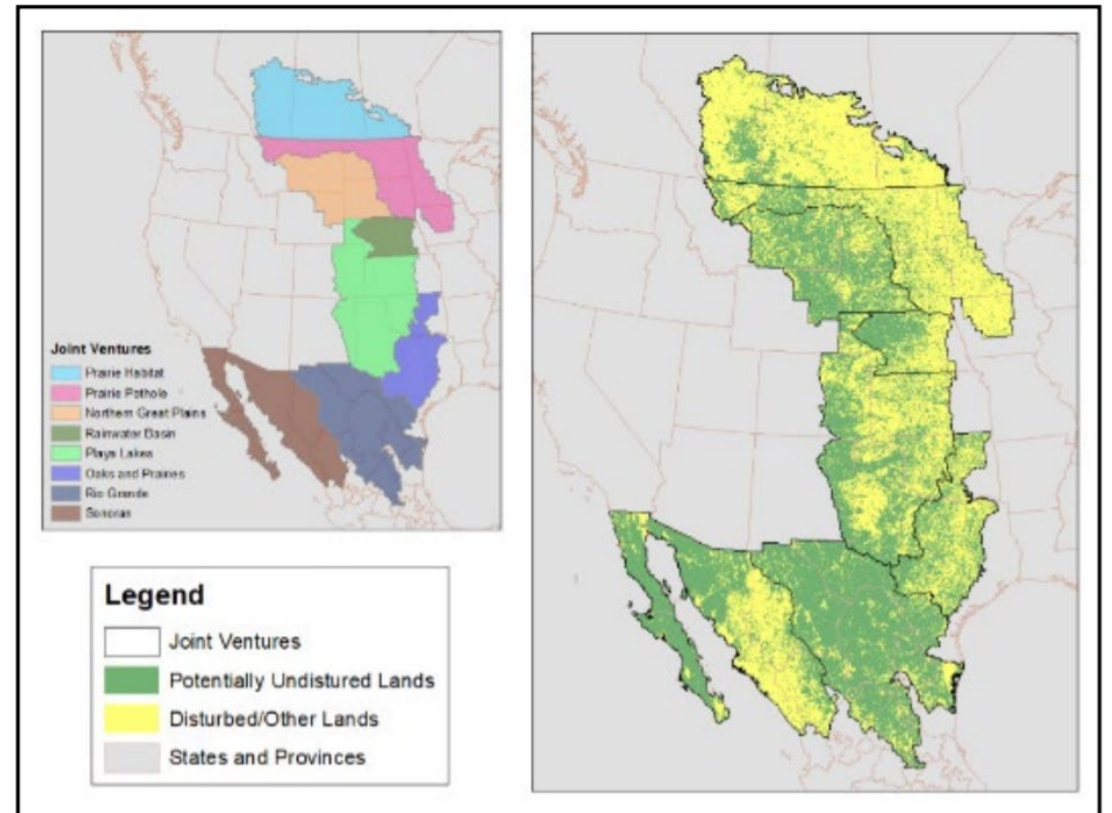
# JV8 Central Grasslands Initiative

- Eight Joint Ventures — representing over 63 federal, state, provincial, non-profit, and industry conservation.



## Grassland Assessment of North American Great Plains Migratory Bird Joint Ventures

- Planning and conservation delivery datasets
- Potentially undisturbed lands (PUDL) (i.e., grass/shrub/wetland complexes with no history of agricultural cultivation or development)



---

# Thanks

---

