

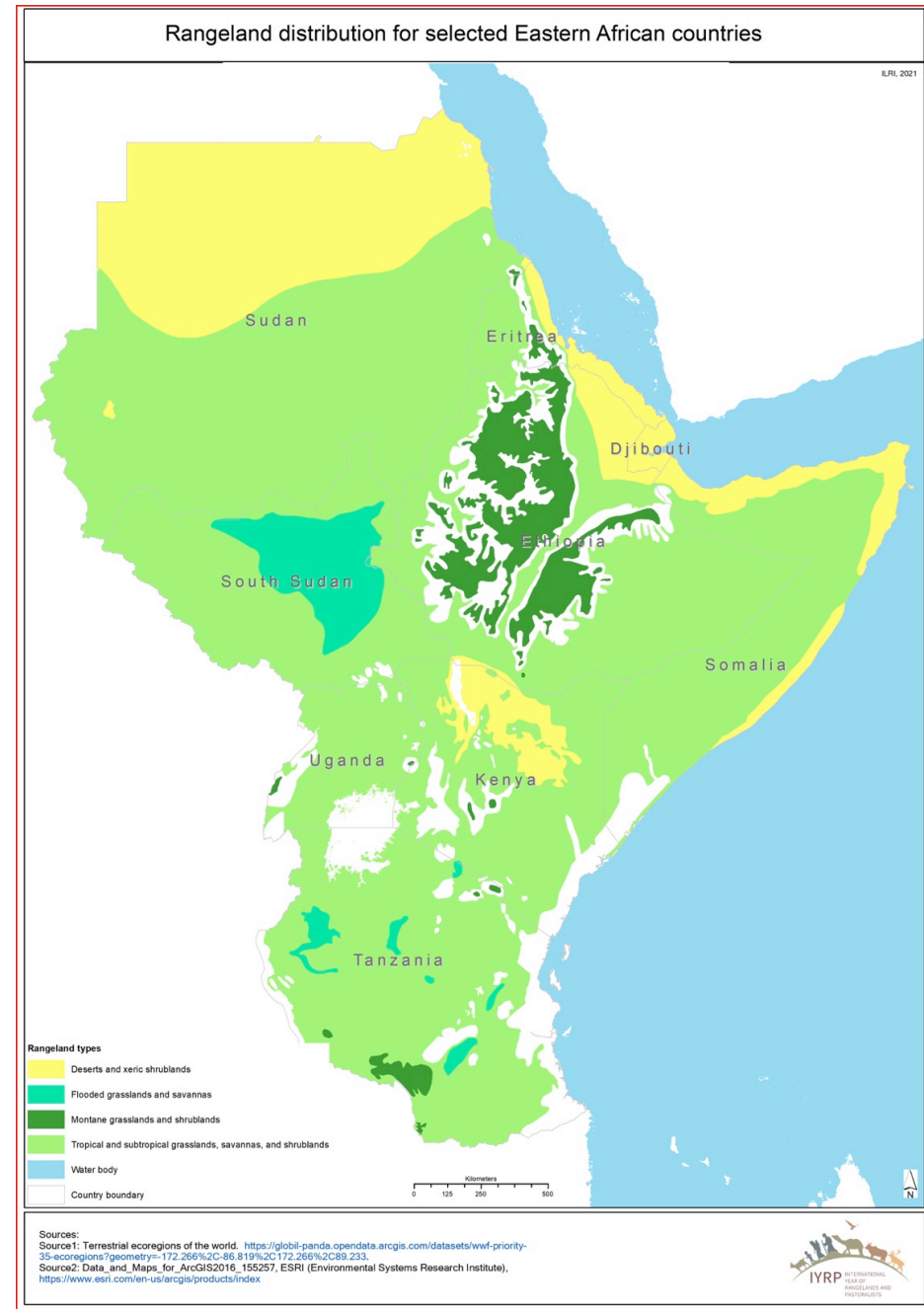
IYRP Panel 1: Land use/tenure & governance

Priority areas for action and research on rangelands and pastoralism in Eastern Africa

Michael Odhiambo

Regional IYRP Support Group – Eastern & Southern Africa

IGC/IRC 2021 25–29 Oct 2021



Urgent need for relevant and appropriate data

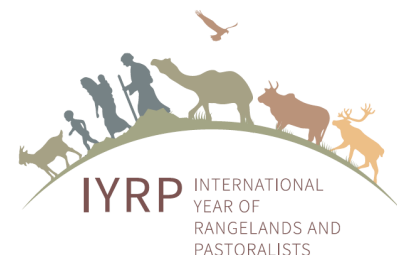
to address knowledge gaps in policy responses to challenges of rangeland management & pastoralist development in Eastern Africa

– As things stand,

- most researched, but least understood
- disaggregated and up-to-date empirical data not easily available

– As a result,

- policy discourse on rangelands and pastoralism tends to be based on outdated generalities and stereotypes
- Leading to inappropriate policies and approaches to development of rangelands and pastoralism



The case for research on rangelands & pastoralism in Eastern Africa

1. To demonstrate contribution of rangelands/pastoralism to livelihoods, food & nutrition security, poverty alleviation & climate change adaptation, with rangelands constituting nearly 75% of land, supporting up to 90% of livestock population and contributing on average 57% of agricultural GDP of IGAD Member States
2. To generate appropriate policy options and institutional arrangements that will enable sustainable management of rangelands and facilitate the practice of pastoralism



IGAD Member States



Areas of policy challenge to rangelands & pastoralism

- 1. Governance** – to integrate traditional institutions & norms in governance frameworks & processes
- 2. Investments for economic development** – to mainstream rangeland management & pastoralist development in national policies & processes, with appropriate interventions for developing livestock & infrastructure and providing social services
- 3. Land, environment and natural resource management** – to design appropriate policies & institutions that secure tenure over land & natural resources by integrating pastoralists IK & traditional institutions of land & natural resource governance & management including communal land tenure & mobility for sustainable rangeland management



Policy challenges & responses

POLICY AREAS WITH CHALLENGES TO RANGELANDS & PASTORALISM

1. Governance
2. Investment for economic development
3. Land, environment & natural resource management

PRIORITY RESEARCH AREAS

Research needed to explain:

1. Logic of pastoralists' rangeland governance & management practices (rationale of pastoralists' land & natural resource tenure systems & practices)
2. Value of rangelands & pastoralism for national, regional & global economies
3. Contribution of rangelands & pastoralism to food security, peace & integration
4. Value of pastoralism & transhumance for productivity & health of rangeland ecosystems
5. Role/potential contribution of pastoralism & pastoralists' IK to climate change adaptation

PRIORITY AREAS FOR ADVOCACY/ACTION

1. Capacity building for pastoralist civil society to effectively engage with policy processes
2. Capacity building for governments & development actors to understand pastoralists' land tenure & land management practices & their importance for sustainable rangeland management
3. Strengthening devolution of governance & natural resource management
4. Reinforcing capacity of governments & civil society in data collection, analysis & dissemination
5. Strengthening interface between research, policy & practice with respect to pastoralism & rangelands